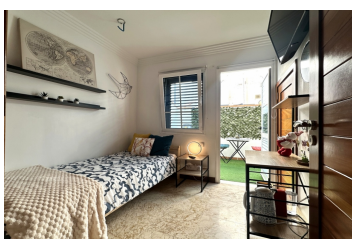


Ref: L525038



Playa Honda

Beds: 2 Bath: 2 Property Type: Duplex Built Size: 77 sqm Plot Size: 77 sqm

Price: **€320,000**

This well-presented duplex in the sought after area of Playa Honda offers a practical and comfortable layout across two floors, with approximately 77 m² of built space. On the ground floor, the property opens into a bright open-plan living and dining area, creating a welcoming space for everyday living. This area flows through to a well-equipped kitchen, which also connects to a useful solana, providing additional utility space. Also on this level is a bedroom with built-in wardrobes and a dedicated storage area, ideal for keeping the space organised. A full bathroom with a walk-in shower completes the ground floor. From here, the property benefits from two terraces, one at the front and a second, more private terrace to the rear, accessed...

